

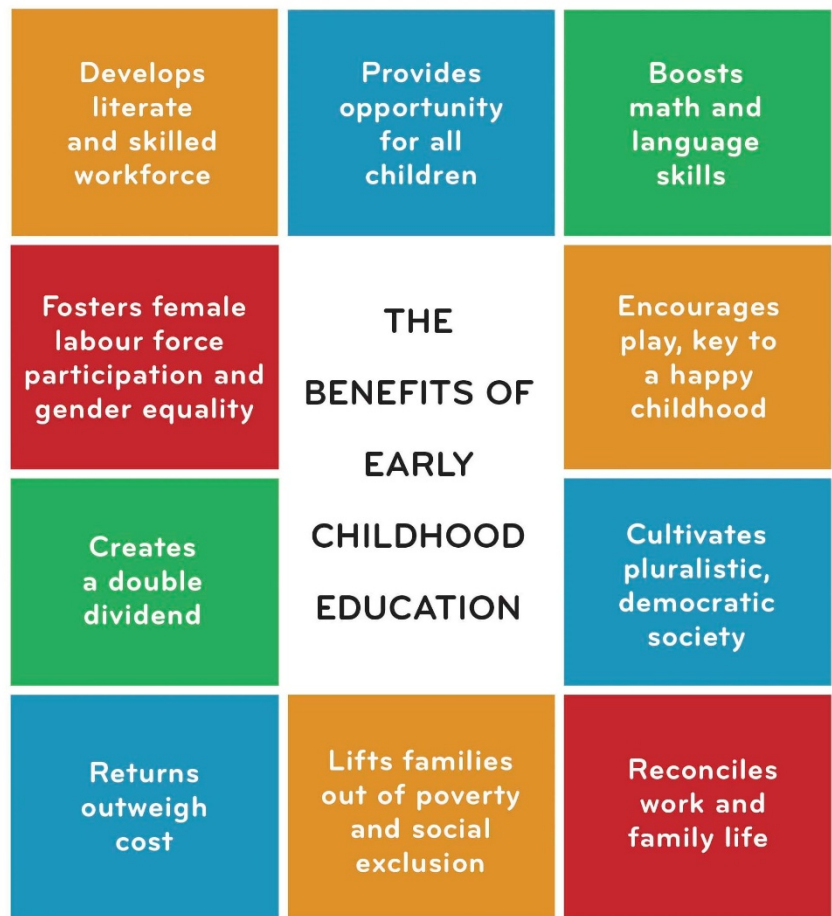
## Child Care Space Action Plan – Greater Vernon

This study looks at the changing demographics and the current inventory of child care spaces within the Greater Vernon area. The Greater Vernon Area (GVA) includes the City of Vernon, District of Coldstream, Electoral Area B and C. The study also looks at future need for child care spaces based on current demographics projected out for 10 years and is based on the information collected through the community survey and stakeholder meetings.

Community surveys garnered more than 450 respondents. The information collected painted a clear picture on the desperate need for additional child care spaces in Greater Vernon. Lack of child care affects parents' ability to work, to advance in their careers, their quality of life (mental, physical and social). It also affects children who may not have an opportunity for interaction with other children supporting the development of social skills and school readiness.

The stakeholder meetings also clearly confirmed the need for many more child care spaces. They also identified the need for a better system for the education and retention of child care staff.

The findings in this study are supported by findings from other municipal child care surveys conducted in BC and across Canada. The Early Years Study 4 support the recommendations coming out of our consultation sessions – that we need a “publicly funded, publicly managed system of early childhood education centres for children starting at the age of 2, which would act as an extension of the public education system” (Early Years Study 4).



Jenkins, Boivin & Akbari, 2015

